





Impact-based M&E

Monitoring and Evaluation for Social Enterprises

Nastassja “Tanya” Quijano
M&E Consultant and
Co-founder of Effective Altruism Philippines





Hello!

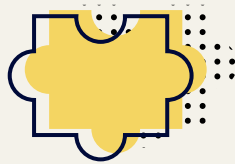
I've been working in the development sector for several years and helped design, monitor, and evaluate programs focused on social protection and development.

Learning Sessions on Impact

Impact Value Chain

(Theory of Change)

What impact to make and how to make it happen



Impact Management

How to measure impact and use it for decision-making



Impact-oriented M&E

How to monitor and evaluate with impact in mind



What's in store?

- Basic concepts and principles of an impact-oriented monitoring and evaluation system
- Introduce tools for monitoring and assessing social enterprises





What's in store?

01

**What is an
impact-oriented
M&E system?**

02

**Why and when
should impact be
considered in M&E?**

03

**How to create an
impact-oriented
M&E system?**



01

What is an impact-oriented M&E?



PROBLEM

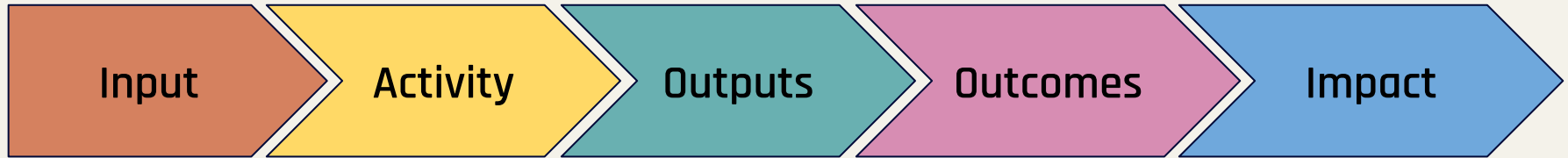
Social enterprises try to contribute in solving social problems



SOLUTION

They try to address this through services and/or products that help communities

What do we mean by impact?



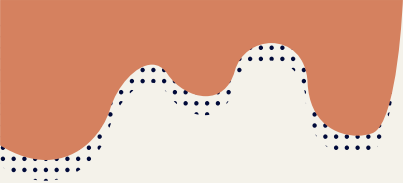
Resources that support activities

Tasks that support impact objectives

Tangible products, services, practices that result from the objectives

Immediate changes and effects that follow from the delivery of products and services

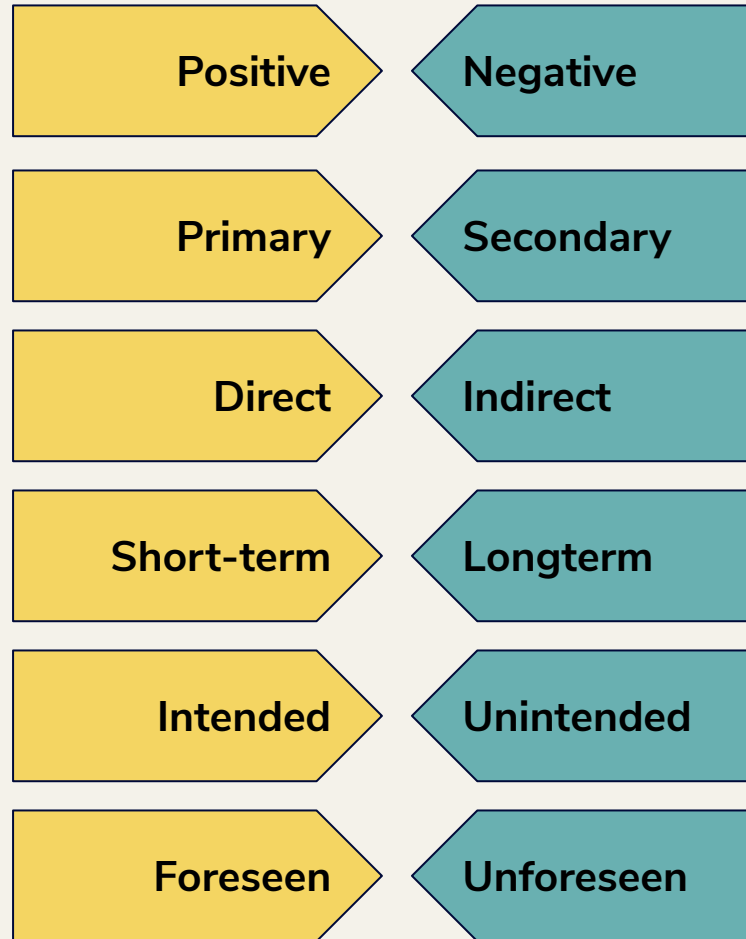
Long-term changes or effects on society or the environment that follow from the achieved outcomes



What Do we mean by Impact?

Dimensions of Impact

Source: Hearn and Buffardi, 2016



What do we mean by impact?



Intended



Positive
Unintended



Negative
Unintended

Foreseen

Program or
policy goals

Spillover effects

Side-effects

Unforeseen

Emergent goals

Nice Surprise






Calamity,
mishap, backlash

Source: Ling, 2014

What do we mean by impact?

Is us the likelihood that impact will be different than expected

The IMP reached global consensus that impact can be measured across five dimensions: What, Who, How Much, Contribution and Risk

Impact dimension	Impact questions each dimension seeks to answer
 What	<ul style="list-style-type: none">•What outcome is occurring in the period?•Is the outcome positive or negative?•How important is the outcome to the people (or planet) experiencing them?
 Who	<ul style="list-style-type: none">•Who experiences the outcome?•How underserved are the affected stakeholders in relation to the outcome?
 How Much	<ul style="list-style-type: none">•How much of the outcome is occurring - across scale, depth and duration?
 Contribution	<ul style="list-style-type: none">•Would this change likely have happened anyway?
 Risk	<ul style="list-style-type: none">•What is the risk to people and planet that impact does not occur as expected?

Classifying an enterprise's individual impacts into A, B or C

Illustrative example of a healthcare company

		Assessment		
Dimension		Effect #1: CO2 emissions	Effect #2: Customer of service	Effect #3: Care worker wages
<input type="checkbox"/> What	What outcome(s) do enterprise activities drive? How important are the outcomes to the people (or planet) experiencing them?	→ Important negative outcome: CO2 emissions	→ Important positive outcome: Access to healthcare services	→ Important positive outcome: Decent income
<input type="radio"/> Who	Who experiences the outcome? How underserved are they in relation to the outcome?	→ The planet, underserved	→ Customers, not underserved	→ Employees, underserved
<input type="checkbox"/> How Much	How much of the outcome occurs - across scale, depth and duration?	→ Marginal depth	→ At scale; marginal change	→ Deep change, at scale, long-term
<input type="checkbox"/> Contribution	Would this change likely have happened anyway?	→ Likely to have occurred anyway	→ Likely better than what would have occurred	→ Likely better than what would have occurred
<input type="checkbox"/> Risk	Which risk factors are material and how likely is the effect different from the expectation?	→ Low risk	→ Medium risk	→ Low risk
		↓	↓	↓
		Act to avoid harm	Benefit stakeholders	Contribute to solutions

What is Monitoring & Evaluation?

Monitoring

Routine tracking of information about a program/project

Measurement of progress toward achieving program/project objectives; most often involves counting what we are doing.

Tracks program/project costs and processes

Provides basis for program/project evaluation when linked to a specific program/project

Evaluation

Comprehensive evaluation is based on research and analysis

Rigorous, scientifically based analysis to determine the merit or worth of a specific program/project.

(Requires study design; sometimes a control or comparison group; often measurement over time).

Analysis of monitoring data to improve programs/projects and inform decisions about future resource allocations

Source: USAID, Measure Evaluation

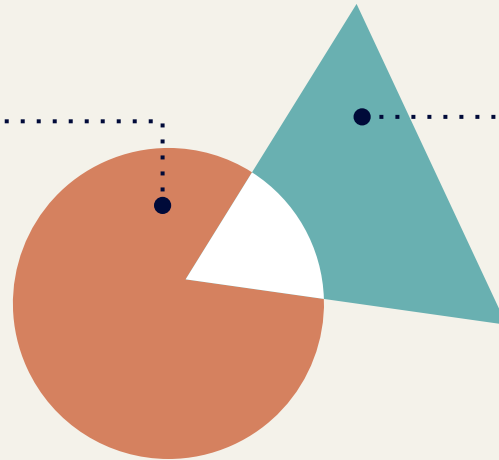
What is Monitoring & Evaluation (M&E)?

Monitoring

Are we doing things.....
right?

Evaluation

Are we doing the
right thing?



M&E Organizing Framework



MANAGE

Roles and
Responsibilities



DEFINE

Intervention
(Program/Policy)



FRAME

Purpose and
Standards



DESCRIBE

Description of the
intervention



CAUSALITY

Extent intervention
caused
outcome/impact



USE

Decision-making
and learning

Source: [BetterEvaluation.org](https://www.betterevaluation.org)



Impact Evaluation



Descriptive

Causal

Evaluative



Impact Monitoring



Tracking of
impact-level results
but no causation

Feedback
mechanism

What is an impact-oriented M&E?

Tracking and judging impact-level results in addition to short-term outputs and intermediate outcomes

- Information on the **intervention/program**
- **Context** of the intervention (economic, social, political, and physical environment)
- Initial **evidence of changes** (observed or potential)
- Information to build **questions on relevance, impact, data sources**



Source: Perrin, 2012

What is an impact-oriented M&E?

INTEGRATES

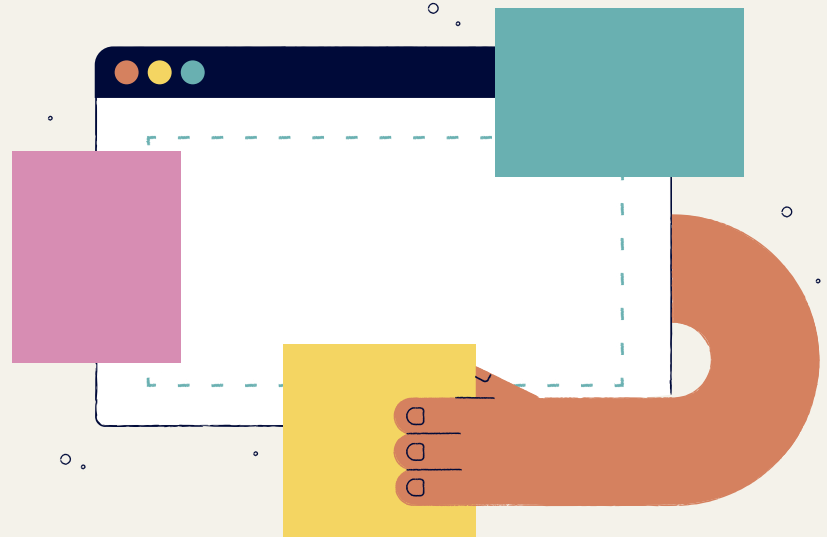
- Tracks, describes, and judges impact-level results and information

UNDERSTANDS

- Clarity of intervention, M&E concepts, roles & responsibilities

ENGAGES

- Implementer and stakeholders in the design, implementation, and management of M&E






02

**Why and when should we
consider impact in our M&E
systems?**



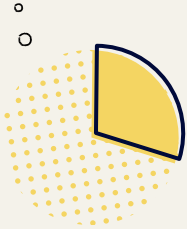
Why should you consider impact in M&E?

Sources: IEG 2009, CONCORD
2010, Guniea et al., 2015,
Vaessen et. al., 2014



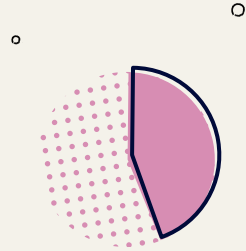
1. **Shifting the focus** from outputs to impact
2. Improving **availability and quality of data** for impact assessment
3. Timely and relative data for **adaptive management** of your program or intervention
4. Creating space for **collective-sense making** of the intervention

Realistic Considerations



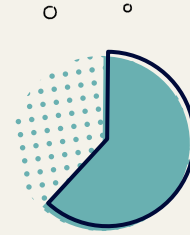
Few

**Impact
Evaluations**



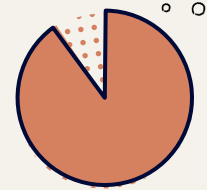
Some

**Outcome
Monitoring
/Evaluation**



Most

**Process
Evaluation**




All

**Input/Output
Monitoring**



When should you consider impact in M&E?

1. M&E efforts match with **decision-making needs**
 2. Determine and evaluate:
 - a. *is impact there and can be observed?*
 - b. *will impact findings be used?*
 3. Adequate **capacity and resources** available within the enterprise
- 

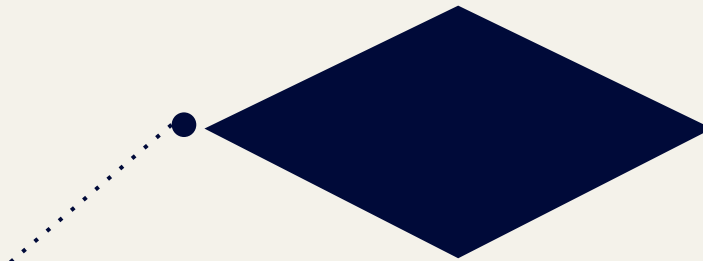


03

How to create an impact-oriented M&E?

Building Blocks of Impact-Oriented M&E

**Impact Value
Chain/Theory
of Change**



- What needs to be monitored or assessed?
- What impacts or outcomes can be observed?
- How will data be analyzed?
- What existing data can be used and what should be collected?

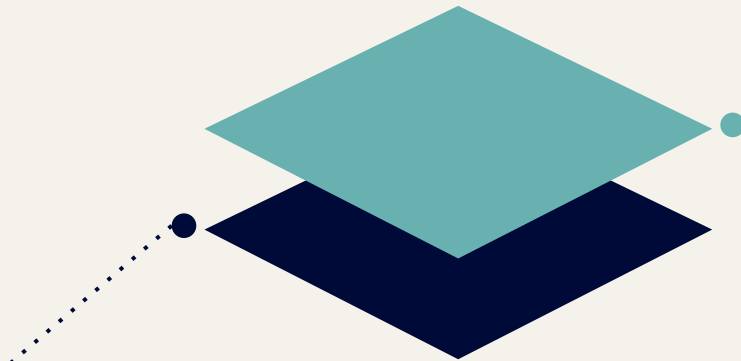
Data needed to make informed decisions

Question Set:	Value Proposition	Customer Satisfaction	Meaningfulness	Outcome Measurement	Poverty Profile	Customer Archetypes
Amend design of product / service to better meet customer needs	●	●		●		
Align marketing messages to value prop that resonates most with customers	●		●	●		
Make quick-win changes to improve customer satisfaction		●				
Provide donors/investors with real impact data; access additional grant funding			●	●	●	
Identify ways to reach more low-income customers	●				●	
Target customers more effectively along attitudinal dimensions						●

Desired action

Building Blocks of Impact-Oriented M&E

**Impact Value
Chain/Theory
of Change**



- How are we faring compared to goals and targets?
- How are we really creating transformation?
- How can we improve?

**Balance
Accountability
& Learning**

Building Blocks of Impact-Oriented M&E

Prioritizing data for Impact

Impact Value Chain/Theory of Change



- How is data available matched with decision-making needs?
- What do we need to understand more in the program, therefore need to conduct M&E?
- What is relevant for stakeholders?
- What is feasible to do?

Balance Accountability & Learning

Building Blocks of Impact-Oriented M&E

Prioritizing data for Impact

Impact Value Chain/Theory of Change



- Why, who, what, how, when?
- Start small and strengthen

Define roles and tasks in M&E

Balance Accountability & Learning

Next steps



Are you clear about how and why M&E results will be used by your social enterprise?



Could you already observe impact-level results?



Do you have the capacity or readiness to implement an impact-oriented M&E?



Thank you!

Do you have any questions?

onenastassja@gmail.com

tanya@effectivealtruism.ph

[linkedin.com/tanyaquijano](https://www.linkedin.com/tanyaquijano)



CREDITS: This presentation template was created by **Slidesgo**, including icons by **Flaticon**, and infographics & images by **Freepik**